

CERTIFICATE OF LOCATION OF GOVERNMENT CORNER

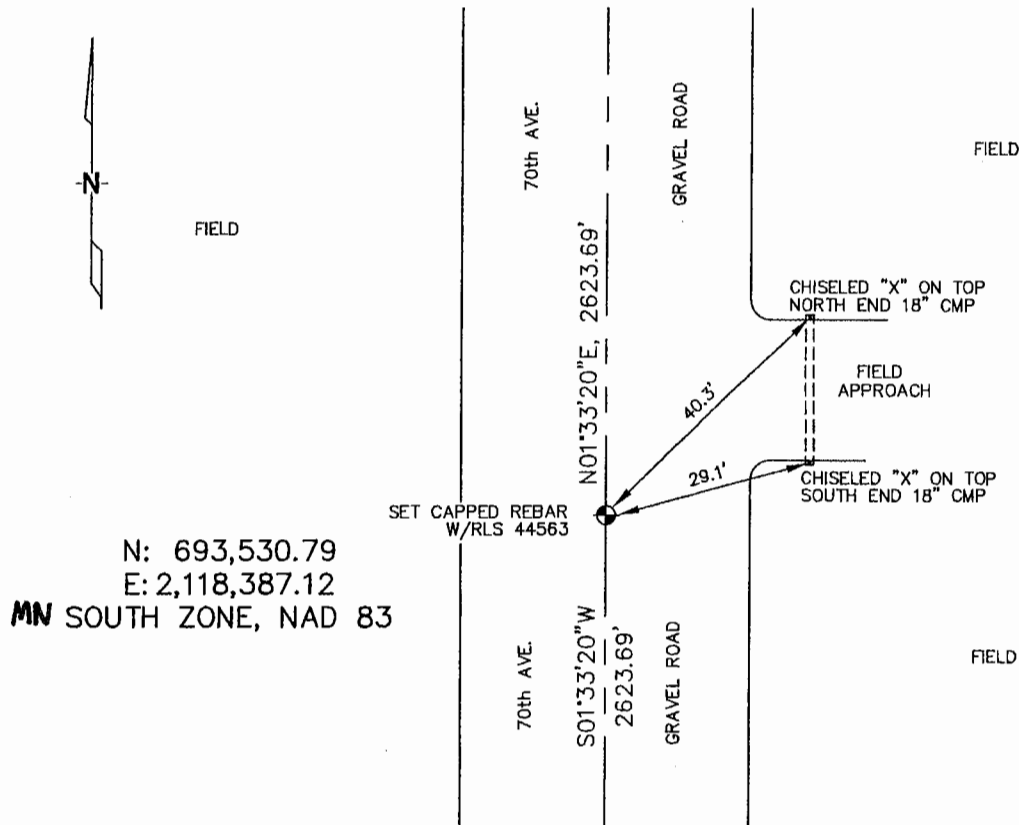
WEST 1/4 Corner of Section 17, Township 106, Range 42, 5TH P.M.

STATE OF MINNESOTA, County of MURRAY

At the corner location shown on the sketch :

- On _____ found _____
- left monument as found, lowered monument, removed monument (explain)
- On 3/21/2006 set 5/8" REBAR w/CAP: RLS 44563.

Sketch of reference ties



Statement of evidence relative to this corner location is on back page

I hereby certify that this document and the data contained herein was prepared by me or under my direct supervision.

Thomas V. Zeff 5/12/06
 Signature Date

- Registration No. _____
- Land Surveyor, Professional Engineer
- County Surveyor, County Engineer

OFFICE OF THE COUNTY RECORDER

County of _____

SEP 28 2006

I hereby certify that this document was filed in the Co. Recorders office at _____ .M. on the day of _____ A.D. , 20

County Recorder James V. Johnson
 By _____, Deputy

DOCUMENT NO. _____

STATEMENT OF EVIDENCE:

WEST 1/4 CORNER, SECTION 17, T. 106 N., R. 42 W.,
MURRAY COUNTY, MINNESOTA

1866 J.W. BISHOP, U.S. DEPUTY SURVEYOR, SET MONUMENT.

3/21/2006 ULTEIG ENGINEERS, INC. SURVEY CREW, BRIAN PAYNE
PARTY CHIEF, FOUND NOTHING.
SET 5/8" REBAR W/ CAP: BLS 44563.

TIES: NB - 40.3' TO CHISELED "X" ON TOP, N. END, 12" C.M.P.
NE - 29.1' TO CHISELED "X" ON TOP, S. END, 18" C.M.P.
N - 2623.69' TO NW CORNER, SEC 17
S - 2623.69' TO SW CORNER, SEC 17.